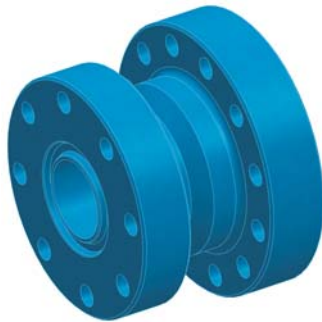


Wellhead Adapters & Crossovers



Spool Flange

Wellhead Adapters

Flanged and threaded wellhead adapters provide a direct connection between surface pressure equipment and the wellhead. They are available in any combination of threaded union and flanged connection. In addition, they may also be supplied with a side port which can be threaded, flanged or welded. This side port is used for the flowing or pumping of materials. The specific types include:

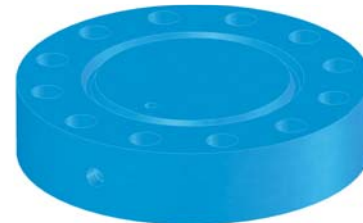
- Spool Flange: Flange on both ends.
- Quick Union Flange: Flange on one end, union on the other end.
- Threaded Flange: Flange with threads on top.
- Blind Flange: Flange with port in side. Used for testing purposes.
- Flow Tee: Any combination of flange or union on either end with a side port in the middle.



Quick Union Flange

Crossovers

Crossovers are used to connect different sizes of pressure control equipment together. They are available in any combination (size and pressure rating) of threaded union.



Blind Flange

Specifications

- Size: 2-1/16", 2-9/16", 3-1/16", 3-1/8", 4-1/16", 5-1/8", 7-1/16"
- Pressure Rating: 2,000psi, 3,000psi, 5,000psi, 10,000psi, 15,000psi
- Service: All equipment is Sour Service

Options

- Thread protectors.
- Painted customer colors.



Threaded Flange



Flow Tee